

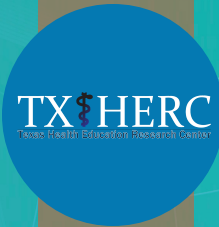
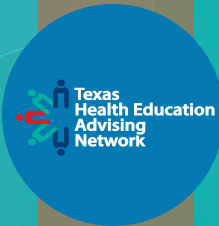
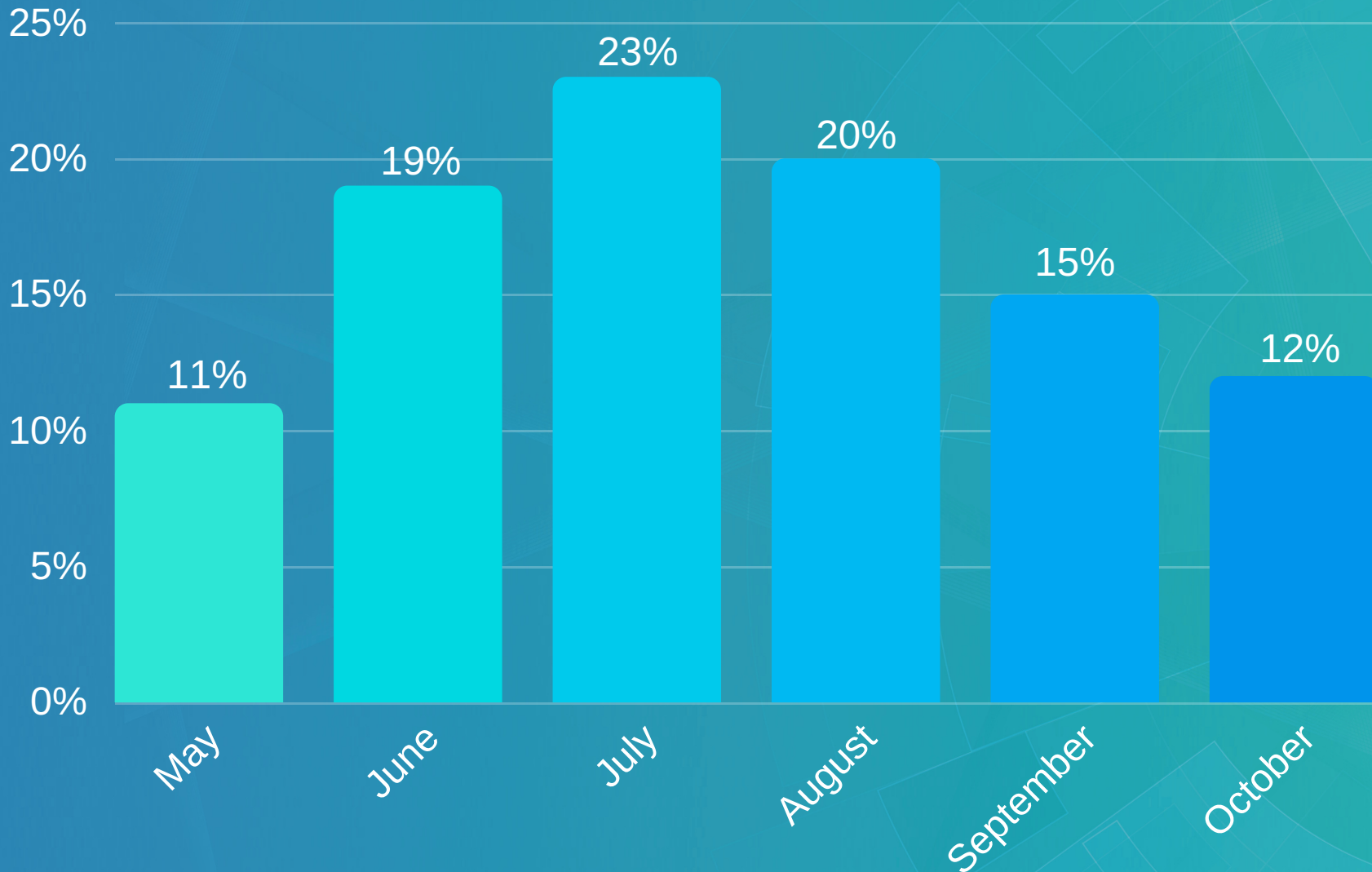


APPLYING EARLY

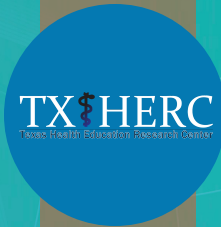
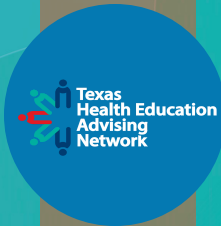
Why It Matters to TMD SAS Applicants

Questions about these data? Email research@tmdsas.com.

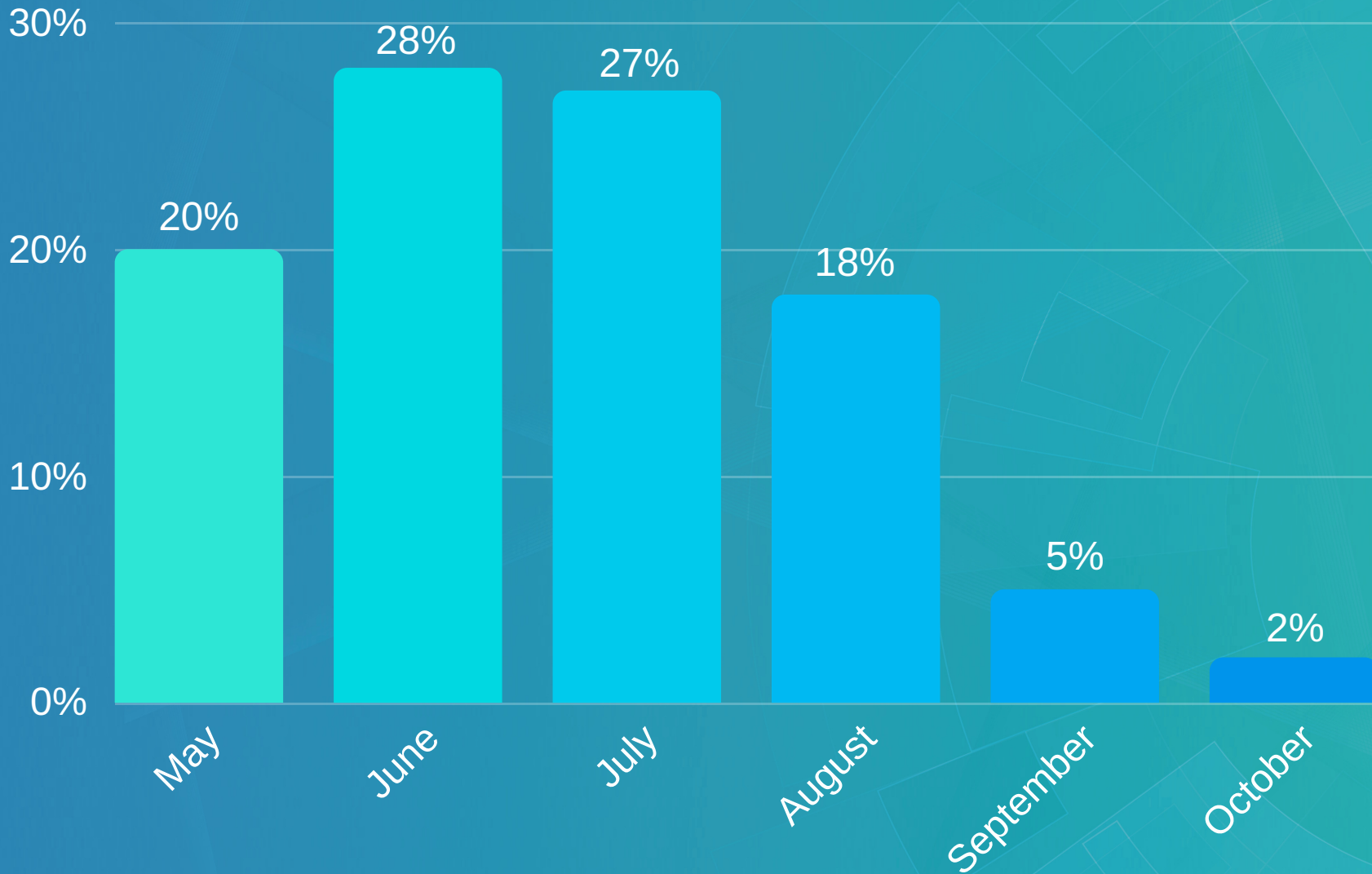
Entry Year 2017: Applicants by Submit Date



*EY2017 Application Deadline was October 1.

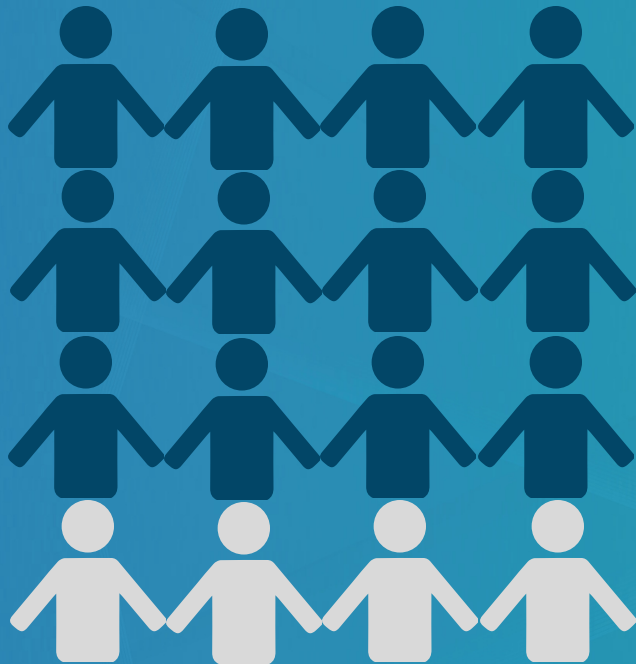


Entry Year 2017: % Interviewed Based on Submission Date



*EY2017 Application Deadline was October 1.

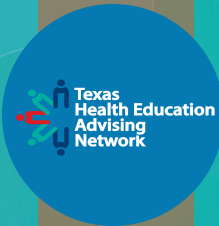
EY 2017 by the Numbers



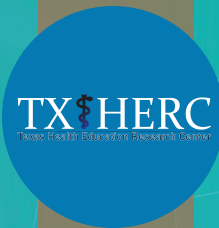
75% Applicants Interviewed in EY2017 submitted their application by August 1

In EY2017, applicants who submitted their application closer to the deadline have to compete for less interview spots at all schools.

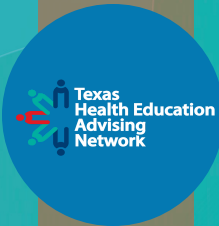
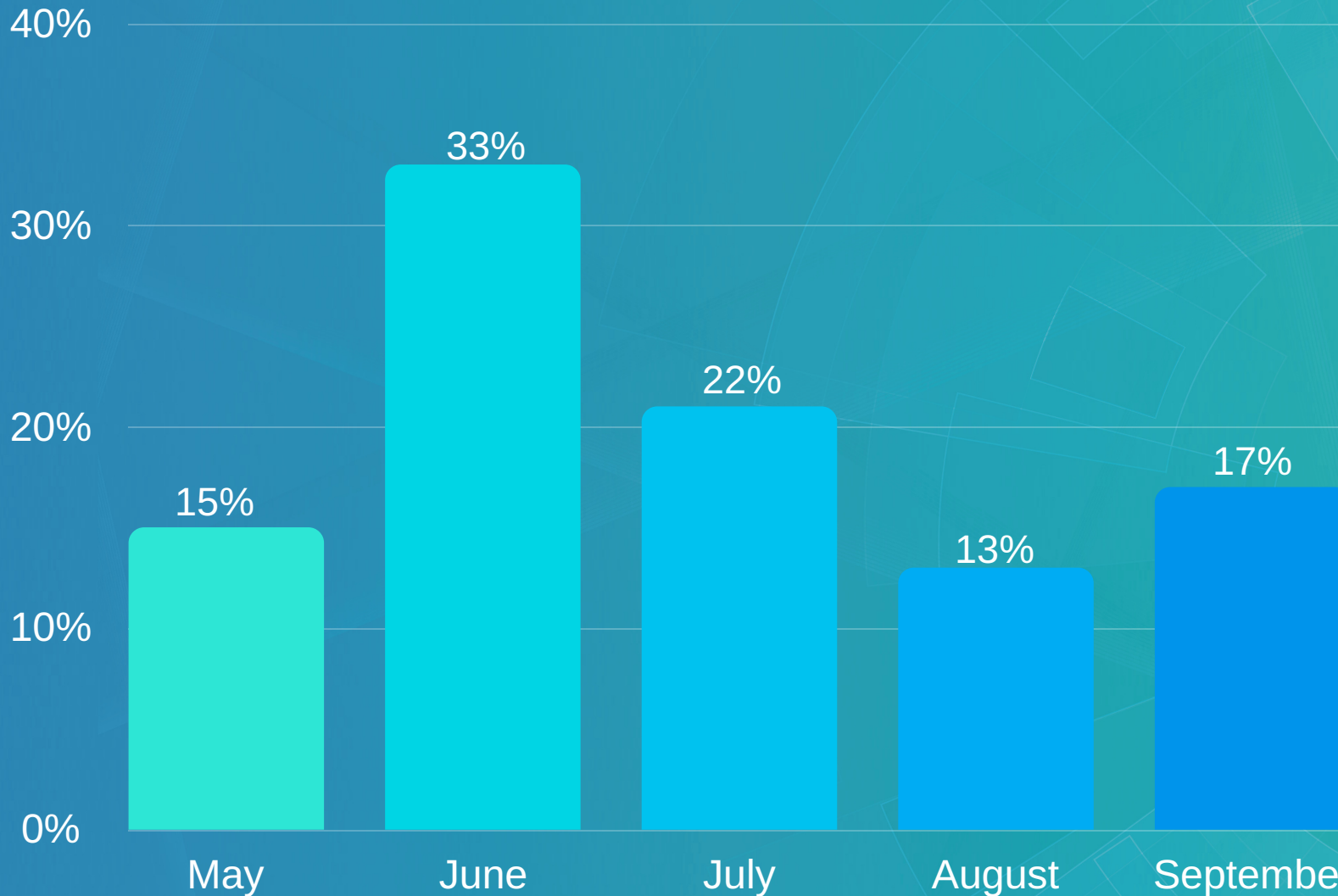
 The 50% of applicants that submitted their application by August received 75% of the interviews offered to the EY2017 class.



Only 25% of applicants who submitted after August 1 were interviewed.



Entry Year 2018: Applicants by Submit Date

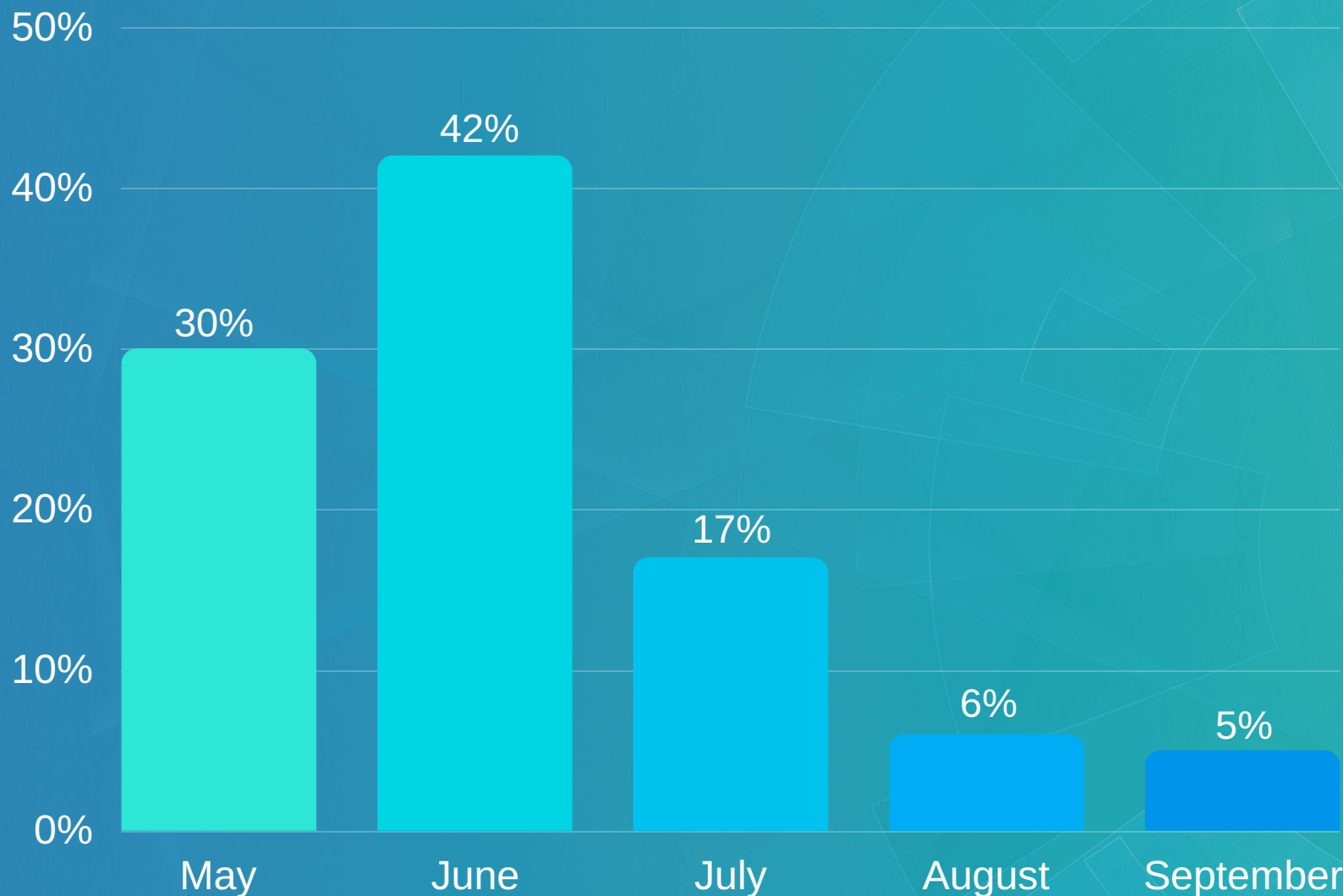


*EY2018 Application Deadline was September 29.



TMDSAS

Entry Year 2018: % Interviewed Based on Submission Date

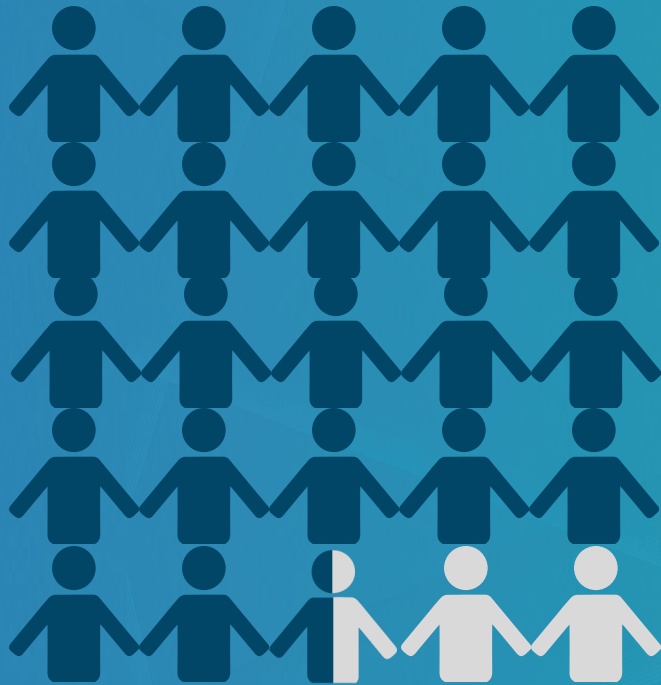


*EY2018 Application Deadline was September 29.



TXHERC
Texas Health Education Research Center

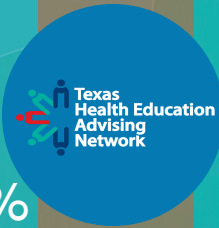
EY 2018 by the Numbers



90% of Applicants Interviewed in EY2018 submitted their application by August 1

In EY2018, the trend continued where applicants who submitted their application closer to the deadline compete for less interview spots at all schools.

 The 70% of applicants submitted their application by July 31, received almost 90% of the interviews offered to the EY2018 class.



Only 10% of applicants who submitted after August 1 were interviewed.

